



Calretinin (ABT-Calret 1) mouse mAb

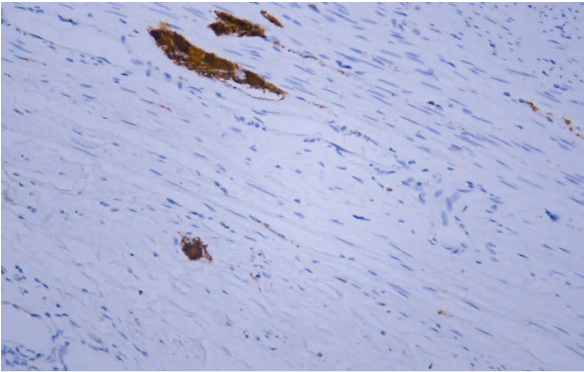
Catalog No	YP-Ab-15346
Isotype	IgG
Reactivity	Human; Predict react with Mouse, Rat
Applications	IHC;IF
Gene Name	CALB2 CAB29
Protein Name	Calretinin (CR) (29 kDa calbindin)
Immunogen	Synthesized peptide derived from human Calretinin
Specificity	This antibody detects endogenous levels of human Calretinin. Heat-induced epitope retrieval (HIER) Citrate buffer of pH6.0 was highly recommended as antigen repair method in paraffin section
Formulation	Liquid in PBS containing 50% glycerol, 0.5% BSA and 0.02% sodium azide.
Source	Mouse, Monoclonal/IgG1, Kappa
Purification	The antibody was affinity-purified from mouse ascites by affinity-chromatography using specific immunogen.
Dilution	IHC-p 1:300-500. IF 1:50-200
Concentration	1 mg/ml
Purity	≥90%
Storage Stability	-20°C/1 year
Synonyms	
Observed Band	
Cell Pathway	Cytoplasmic, Nuclear
Tissue Specificity	Brain.
Function	function:Calretinin is a calcium-binding protein which is abundant in auditory neurons.,online information:Calbindin entry,similarity:Belongs to the calbindin family.,similarity:Contains 6 EF-hand domains.,tissue specificity:Brain.,
Background	This gene encodes an intracellular calcium-binding protein belonging to the troponin C superfamily. Members of this protein family have six EF-hand domains which bind calcium. This protein plays a role in diverse cellular functions, including message targeting and intracellular calcium buffering. It also functions as a modulator of neuronal excitability, and is a diagnostic marker for some human diseases, including Hirschsprung disease and some cancers. Alternative splicing results in multiple transcript variants. [provided by RefSeq, Jun 2010],
matters needing attention	Avoid repeated freezing and thawing!



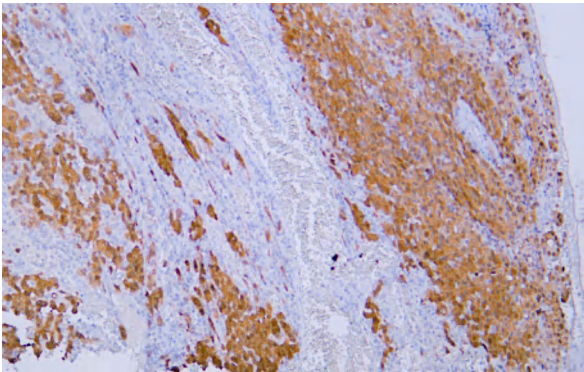
Usage suggestions

This product can be used in immunological reaction related experiments. For more information, please consult technical personnel.

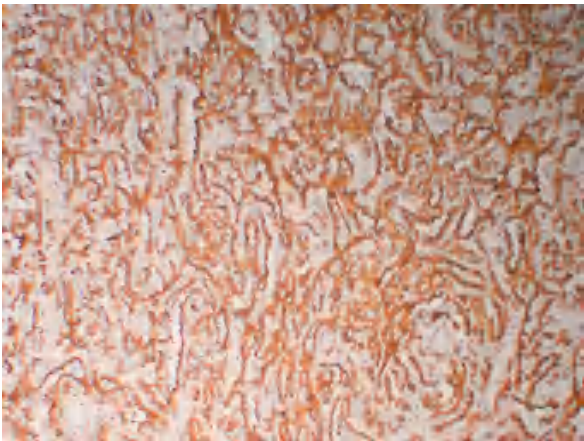
Products Images



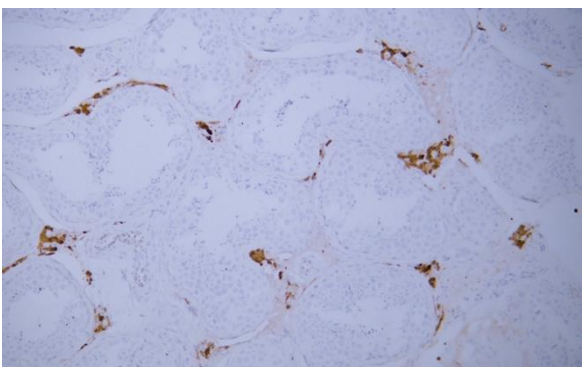
Human appendix tissue was stained with anti-Calretinin(ABT-Calret 1) antibody.



Human mesothelioma tissue was stained with anti-Calretinin(ABT-Calret 1) antibody.



Human mesothelioma tissue was stained with anti-Calretinin(ABT-Calret 1) antibody.



Human testis tissue was stained with anti-Calretinin(ABT-Calret 1) antibody.